



SOOKIN

PTFE ▶ Hose & Assembly
Manufacturer
Polytetrafluoroethene (PTFE)&Teflon



Name: Ningbo sookin Co., Ltd.

Address:

WhatsApp: +86 13248555855

LinkedIn:

Facebook:

Email: Market@sookin.net

Internet: www.sookin.net





Introduction

SOOKIN HOSE

is a factory specializing in the manufacture of P.T.F.E HOSE

Our products are:

Wire braided series (SAE J517-100R14\One or more layers of steel wire braid),

Fiber weaving series (Dacron\cottno yarn\motley cotton yarn\aramid fiber),

Cover Series (PU\PVC\PVDF\ TPU\Silicone\Neoprene), Convoluted hose negative pressure series, The above series can manufacture conductive inner core

Quantity of equipment:

Polytetrafluoroethylene (P.T.F.E) sintering equipment-10, high-speed braiding machine-20, pulse testing machine-1, high-temperature pulse testing machine-1, tensile test bench-1, air tightness test bench-1, electrical breakdown Test bench-1, freezing test machine-1, blasting test bench-2, strong light impurity detection bench-1

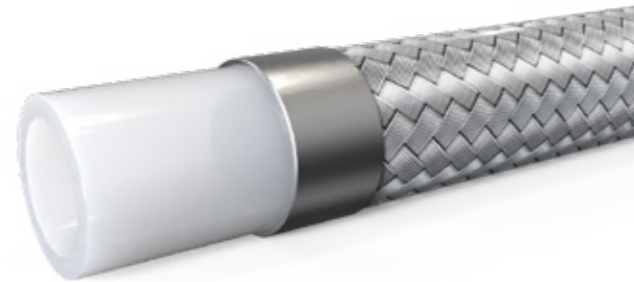
Our advantages:

super high cost performance, fast delivery cycle, strict factory inspection (high and low temperature pulse test\burst test\freezing test\tensile test\air tightness test), choose Japanese Daikin\American DuPont as the main raw materials , a variety of packaging methods, product customization services.

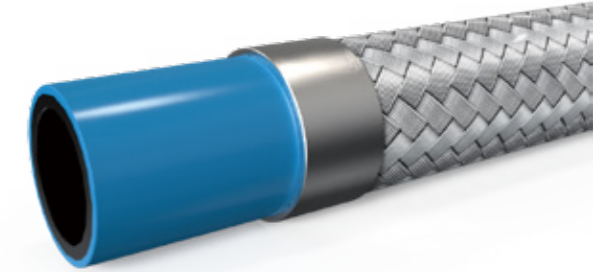


Content

| | | |
|----|-------|--|
| 01 | | KIN425 - SAE J517 100R14 |
| 02 | | KIN426 - (ELECTRICAL CONDUCTIVE) - R14 |
| 03 | | KIN428 - R14 INCREASED WALL |
| 04 | | KIN430 - PTFE - CONVOLUTED HOSE |
| 05 | | KIN502 - PTFE - ELECTRICAL CONDUCTIVE CONVOLUTED HOSE |
| 06 | | KIN506 - R14 2W |
| 07 | | KIN508 - PTFE GAS HOSE |
| 08 | | KIN510 - MEDIUM PRESSURE FLUORO - COMP HOSE |
| 09 | | KIN512 - GAS HOSE - ARAMID |
| 10 | | KIN516 - GAS HOSE - 1W |
| 11 | | KIN518 - BRAKE FLUID HOSE |
| 12 | | KIN520 - NITROGEN GAS HOSE |
| 13 | | KIN522 - CONVOLUTED PTFE HOSE WITH HELIX WIRE AND STAINLESS STEEL STANDARD WALL |
| 14 | | KIN526 - CONVOLUTED PTFE HOSE WITH HELIX WIRE AND POLYPROPYLENE YARN STANDARD WALL |
| 15 | | KIN528 - CONVOLUTED PTFE HOSE WITH POLYPROPYLENE YARN - STANDARD WALL |
| 16 | | KIN530 - MEDIUM PRESSURE HOSE |
| 17 | | KIN602 - HIGH PRESSURE PTFE HOSE (D-PAC BRAID DESIGN) |
| 18 | | KIN606 - TAPE WRAPPED ELECTRICAL CONDUCTIVE CONVOLUTED HOSE |
| 19 | | KIN608 - TAPE WRAPPED CONVOLUTED HOSE |
| 20 | | KIN610 - SMOOTH BORE TUBING ANGE |
| 21 | | KIN612 - SMOOTH BORE TUBING ANGE |
| 22 | | KIN616 - CONVOLUTED TUBING RANGE |
| 23 | | KIN618 - CONVOLUTED TUBING RANGE |
| 24 | | KIN620 - PTFE CAPILLARY TUBING |

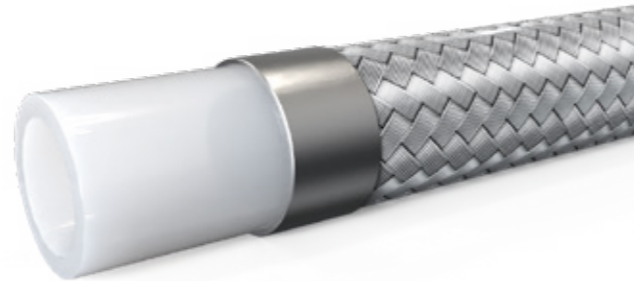
**KIN425 - R14****Applicable Standard :** SAE J517 - 100R14**Construction :****Inner tube :** Sintered tube of polytetrafluoroethylene (PTFE)**Reinforcement :** Single braid of 304 series of stainless steel wire**Application :** PTFE hose has an excellent temperature characteristics both in high and low temperature, Excellent chemical resistance, non contamination properties, low coefficient of friction and resists deterioration. Therefore the hose is used generally in applications where all or one of the above properties is the main criteria**Note :** Double braided available for higher performance, please check our part # KIN506

| Item Code | Dash Size | WT | | ID | | OD | | WP | | BP | | BR/r | | W |
|-----------|-----------|------|-------|-------|-------|-------|------|-----|-------|-----|------|------|-----|---|
| | | mm | inch | mm | inch | mm | inch | psi | bar | psi | bar | inch | mm | |
| KIN425-3 | -3 | 1.00 | 1/8 | 3.35 | 0.252 | 6.4 | 3260 | 225 | 13040 | 900 | 1.6 | 40 | 65 | |
| KIN425-4 | -4 | 0.75 | 3/16 | 4.83 | 0.300 | 7.6 | 3000 | 210 | 12000 | 840 | 2.0 | 50 | 84 | |
| KIN425-5 | -5 | 0.65 | 1/4 | 6.48 | 0.380 | 9.7 | 3000 | 210 | 12000 | 840 | 3.0 | 75 | 121 | |
| KIN425-6 | -6 | 0.75 | 5/16 | 8.00 | 0.440 | 11.2 | 2500 | 175 | 10000 | 700 | 4.0 | 100 | 163 | |
| KIN425-7 | -7 | 0.75 | 3/8 | 9.50 | 0.495 | 12.6 | 2400 | 165 | 9600 | 660 | 5.0 | 125 | 170 | |
| KIN425-8 | -8 | 0.75 | 13/32 | 10.41 | 0.543 | 13.8 | 2000 | 140 | 8000 | 560 | 5.3 | 135 | 185 | |
| KIN425-10 | -10 | 0.75 | 1/2 | 12.83 | 0.650 | 16.5 | 1750 | 120 | 7000 | 480 | 6.5 | 165 | 234 | |
| KIN425-12 | -12 | 0.90 | 5/8 | 16.00 | 0.765 | 19.43 | 1270 | 88 | 5080 | 352 | 8.0 | 200 | 318 | |
| KIN425-14 | -14 | 0.90 | 3/4 | 19.18 | 0.900 | 22.9 | 1100 | 75 | 4400 | 300 | 9.1 | 230 | 395 | |
| KIN425-16 | -16 | 1.00 | 7/8 | 22.23 | 1.030 | 26.2 | 900 | 62 | 3600 | 248 | 9.1 | 230 | 462 | |
| KIN425-18 | -18 | 1.05 | 1 | 25.53 | 1.148 | 29.15 | 900 | 62 | 3600 | 248 | 11.8 | 300 | 528 | |
| KIN425-20 | -20 | 1.20 | 1.1/8 | 28.58 | 1.293 | 32.85 | 630 | 44 | 2520 | 176 | 16.1 | 410 | 585 | |

Temperature Range : -54°C to +260°C**KIN426 - (ELECTRICAL CONDUCTIVE) - R14****Applicable Standard :** SAE J517 - 100R14**Construction :****Inner tube :** Sintered tube of polytetrafluoroethylene (PTFE)**Reinforcement :** Single braid of 304 series of stainless steel wire**Application :** PTFE hose has an excellent temperature characteristics both in high and low temperature, Excellent chemical resistance, non contamination properties, low coefficient of friction and resists deterioration. Therefore the hose is used generally in applications where all or one of the above properties is the main criteria

| Item Code | Dash Size | WT | | ID | | OD | | WP | | BP | | BR/r | | W |
|-----------|-----------|------|-------|-------|-------|-------|------|-----|-------|-----|------|------|-----|---|
| | | mm | inch | mm | inch | mm | inch | mm | inch | psi | bar | psi | bar | |
| KIN426-3 | -3 | 1.00 | 1/8 | 3.35 | 0.252 | 6.4 | 3260 | 225 | 13040 | 900 | 1.6 | 40 | 65 | |
| KIN426-4 | -4 | 0.75 | 3/16 | 4.83 | 0.300 | 7.6 | 3000 | 210 | 12000 | 840 | 2.0 | 50 | 84 | |
| KIN426-5 | -5 | 0.65 | 1/4 | 6.48 | 0.380 | 9.7 | 3000 | 210 | 12000 | 840 | 3.0 | 75 | 121 | |
| KIN426-6 | -6 | 0.75 | 5/16 | 8.00 | 0.440 | 11.2 | 2500 | 175 | 10000 | 700 | 4.0 | 100 | 163 | |
| KIN426-7 | -7 | 0.75 | 3/8 | 9.50 | 0.495 | 12.6 | 2400 | 165 | 9600 | 660 | 5.0 | 125 | 170 | |
| KIN426-8 | -8 | 0.75 | 13/32 | 10.41 | 0.543 | 13.8 | 2000 | 140 | 8000 | 560 | 5.3 | 135 | 185 | |
| KIN426-10 | -10 | 0.75 | 1/2 | 12.83 | 0.650 | 16.5 | 1750 | 120 | 7000 | 480 | 6.5 | 165 | 234 | |
| KIN426-12 | -12 | 0.90 | 5/8 | 16.00 | 0.765 | 19.43 | 1270 | 88 | 5080 | 352 | 8.0 | 200 | 318 | |
| KIN426-14 | -14 | 0.90 | 3/4 | 19.18 | 0.900 | 22.9 | 1100 | 75 | 4400 | 300 | 9.1 | 230 | 395 | |
| KIN426-16 | -16 | 1.00 | 7/8 | 22.23 | 1.030 | 26.2 | 900 | 62 | 3600 | 248 | 9.1 | 230 | 462 | |
| KIN426-18 | -18 | 1.05 | 1 | 25.53 | 1.148 | 29.15 | 900 | 62 | 3600 | 248 | 11.8 | 300 | 528 | |
| KIN426-20 | -20 | 1.20 | 1.1/8 | 28.58 | 1.293 | 32.85 | 630 | 44 | 2520 | 176 | 16.1 | 410 | 585 | |

Temperature Range : -54°C to +260°C

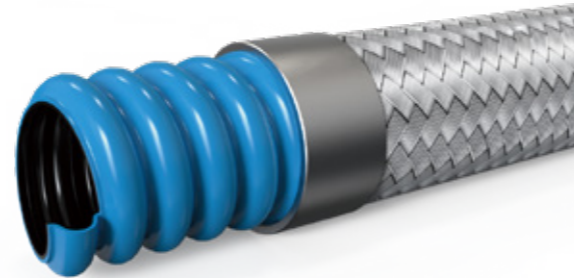
**KIN428 - R14 INCREASED WALL****Applicable Standard :** SAE J517 - 100R14**Construction :****Inner tube :** Sintered tube of polytetrafluoroethylene (PTFE)**Reinforcement :** Single or Double braids of 304 series of stainless steel wire**Application :** PTFE hose has an excellent temperature characteristics both in high and low temperature, Excellent chemical resistance, non contamination properties, low coefficient of friction and resists deterioration. Therefore the hose is used generally in applications where all or one of the above properties is the main criteria

| Item Code | Dash Size | WT | ID | | OD | | WP | | BP | | BR/r | | W |
|-----------|-----------|------|------|-------|-------|-------|------|-----|-------|-----|------|-----|-----|
| | | mm | inch | mm | inch | mm | psi | bar | psi | bar | inch | mm | g/m |
| KIN428-4 | -4 | 1.00 | 3/16 | 4.80 | 0.320 | 8.1 | 3000 | 210 | 12000 | 840 | 2.0 | 51 | 95 |
| KIN428-5 | -5 | 1.00 | 1/4 | 6.40 | 0.390 | 9.9 | 2610 | 180 | 10440 | 720 | 3.0 | 75 | 127 |
| KIN428-6 | -6 | 1.00 | 5/16 | 8.00 | 0.465 | 11.8 | 2538 | 175 | 10150 | 700 | 4.0 | 102 | 155 |
| KIN428-7 | -7 | 1.00 | 3/8 | 9.50 | 0.510 | 13.0 | 2400 | 165 | 9600 | 660 | 4.9 | 125 | 177 |
| KIN428-10 | -10 | 1.00 | 1/2 | 12.70 | 0.650 | 16.5 | 1750 | 120 | 7000 | 480 | 6.1 | 155 | 245 |
| KIN428-12 | -12 | 1.10 | 5/8 | 16.00 | 0.790 | 20.1 | 1270 | 88 | 5080 | 352 | 6.5 | 165 | 332 |
| KIN428-14 | -14 | 1.10 | 3/4 | 19.00 | 0.925 | 23.5 | 1000 | 70 | 4000 | 280 | 8.5 | 215 | 450 |
| KIN428-16 | -16 | 1.20 | 7/8 | 22.00 | 1.110 | 28.20 | 1250 | 86 | 5000 | 345 | 7.4 | 187 | 715 |

Temperature Range : -54°C to +260°C**KIN430 - PTFE - CONVOLUTED HOSE****Applicable Standard :** SAE J517 - 100R14**Construction :****Inner tube :** Helically convoluted sintered tube of polytetrafluoroethylene (PTFE)**Reinforcement :** Single braid of 304/316 series of stainless steel wire**Application :** PTFE hose has an excellent temperature characteristics both in high and low temperature, Excellent chemical resistance, non contamination properties, low coefficient of friction and resists deterioration. Therefore the hose is used generally in applications where all or one of the above properties is the main criteria in automotive, chemical, pharmaceutical & food processing, plastic & rubber molding machines. Also for some applications the tube can also be made conductive to dissipate electro-static charges**Note :** Working and burst pressure are at 20°C temperature

| Item Code | Dash Size | WT | ID | | OD | | WP | | BP | | BR/r | | W |
|-----------|-----------|------|-------|-------|-------|-------|------|-----|-------|-----|------|-----|------|
| | | mm | inch | mm | inch | mm | psi | bar | psi | bar | inch | mm | g/m |
| KIN430-04 | -4 | 0.75 | 1/4 | 6.60 | 0.410 | 10.4 | 2500 | 175 | 10000 | 700 | 0.8 | 20 | 149 |
| KIN430-05 | -5 | 0.75 | 5/16 | 8.18 | 0.490 | 12.4 | 2300 | 160 | 9200 | 640 | 0.8 | 20 | 170 |
| KIN430-06 | -6 | 0.75 | 3/8 | 9.65 | 0.540 | 13.7 | 1740 | 120 | 6960 | 480 | 0.8 | 20 | 182 |
| KIN430-08 | -8 | 0.75 | 1/2 | 12.83 | 0.725 | 18.4 | 1595 | 110 | 6380 | 440 | 1.0 | 25 | 289 |
| KIN430-10 | -10 | 0.80 | 5/8 | 16.00 | 0.827 | 21.0 | 1450 | 100 | 5800 | 400 | 2.0 | 50 | 349 |
| KIN430-12 | -12 | 0.90 | 3/4 | 19.18 | 1.020 | 25.9 | 1160 | 80 | 4640 | 320 | 2.6 | 65 | 494 |
| KIN430-14 | -14 | 1.00 | 7/8 | 22.23 | 1.170 | 29.7 | 870 | 60 | 3480 | 240 | 3.1 | 80 | 565 |
| KIN430-16 | -16 | 1.00 | 1 | 25.53 | 1.331 | 33.80 | 800 | 55 | 3200 | 220 | 3.6 | 90 | 677 |
| KIN430-20 | -20 | 1.00 | 1.1/4 | 31.88 | 1.680 | 42.7 | 665 | 45 | 2660 | 180 | 4.4 | 110 | 891 |
| KIN430-24 | -24 | 1.00 | 1.1/2 | 38.23 | 1.890 | 48.0 | 510 | 35 | 2040 | 140 | 6.0 | 150 | 959 |
| KIN430-32 | -32 | 1.10 | 2 | 50.93 | 2.420 | 61.50 | 365 | 25 | 1460 | 100 | 8.0 | 200 | 1309 |
| KIN430-48 | -48 | 1.30 | 3 | 76.00 | 3.504 | 89.00 | 236 | 16 | 945 | 65 | 12.2 | 310 | 1550 |

Temperature Range : -54°C to +260°C

**KIN502 - PTFE - ELECTRICAL CONDUCTIVE CONVOLUTED HOSE****Construction :****Inner tube :** Helically convoluted sintered tube of polytetrafluoroethylene (PTFE) (Electrical Conductive)**Reinforcement :** Single braid of 304/316 series of stainless steel wire**Application :** PTFE hose has an excellent temperature characteristics both in high and low temperature, Excellent chemical resistance, non contamination properties, low coefficient of friction and resists deterioration. Therefore the hose is used generally in applications where all or one of the above properties is the main criteria in automotive, chemical, pharmaceutical & food processing, plastic & rubber molding machines. Also for some applications the tube can also be made conductive to dissipate electro-static charges

| Item Code | Dash Size | WT | | ID | | OD | | WP | | BP | | BR/r | | W |
|-----------|-----------|------|-------|-------|-------|-------|------|-----|-------|-----|------|------|------|-----|
| | | mm | inch | mm | inch | mm | inch | psi | bar | psi | bar | inch | mm | g/m |
| | | mm | inch | mm | inch | mm | inch | psi | bar | psi | bar | inch | mm | g/m |
| KIN502-04 | -4 | 0.75 | 1/4 | 6.60 | 0.410 | 10.4 | 2500 | 175 | 10000 | 700 | 0.8 | 20 | 149 | |
| KIN502-05 | -5 | 0.75 | 5/16 | 8.18 | 0.490 | 12.4 | 2300 | 160 | 9200 | 640 | 0.8 | 20 | 170 | |
| KIN502-06 | -6 | 0.75 | 3/8 | 9.65 | 0.540 | 13.7 | 1740 | 120 | 6960 | 480 | 0.8 | 20 | 182 | |
| KIN502-08 | -8 | 0.75 | 1/2 | 12.83 | 0.725 | 18.4 | 1595 | 110 | 6380 | 440 | 1.0 | 25 | 289 | |
| KIN502-10 | -10 | 0.80 | 5/8 | 16.00 | 0.827 | 21.0 | 1450 | 100 | 5800 | 400 | 2.0 | 50 | 349 | |
| KIN502-12 | -12 | 0.90 | 3/4 | 19.18 | 1.020 | 25.9 | 1160 | 80 | 4640 | 320 | 2.6 | 65 | 494 | |
| KIN502-14 | -14 | 1.00 | 7/8 | 22.23 | 1.170 | 29.7 | 870 | 60 | 3480 | 240 | 3.1 | 80 | 565 | |
| KIN502-16 | -16 | 1.00 | 1 | 25.53 | 1.331 | 33.80 | 800 | 55 | 3200 | 220 | 3.6 | 90 | 677 | |
| KIN502-20 | -20 | 1.00 | 1.1/4 | 31.88 | 1.680 | 42.7 | 665 | 45 | 2660 | 180 | 4.4 | 110 | 891 | |
| KIN502-24 | -24 | 1.00 | 1.1/2 | 38.23 | 1.890 | 48.0 | 510 | 35 | 2040 | 140 | 6.0 | 150 | 959 | |
| KIN502-32 | -32 | 1.10 | 2 | 50.93 | 2.420 | 61.50 | 365 | 25 | 1460 | 100 | 8.0 | 200 | 1309 | |
| KIN502-48 | -48 | 1.30 | 3 | 76.00 | 3.504 | 89.00 | 235 | 16 | 945 | 65 | 12.2 | 310 | 1309 | |

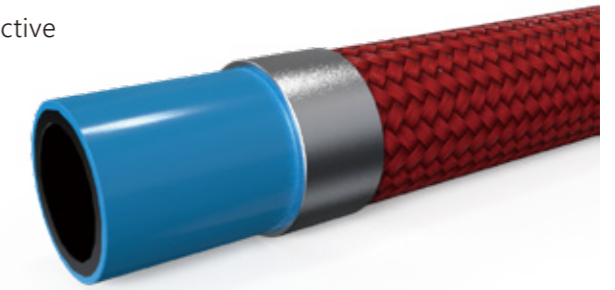
Temperature Range : -54°C to +260°C**KIN506 - R14 2W****Applicable Standard :** Exceeds SAE J517 - 100R14 pressure requirements**Construction :****Inner tube :** Sintered tube of polytetrafluoroethylene (PTFE)**Reinforcement :** Double braids of 304 series of stainless steel wire**Application :** PTFE hose has an excellent temperature characteristics both in high and low temperature, Excellent chemical resistance, non contamination properties, low coefficient of friction and resists deterioration. Therefore the hose is used generally in applications where all or one of the above properties is the main criteria

| Item Code | Dash Size | WT | | ID | | OD | | WP | | BP | | BR/r | | W |
|-----------|-----------|------|-------|-------|-------|-------|------|-----|-------|------|------|------|-----|-----|
| | | mm | inch | mm | inch | mm | inch | psi | bar | psi | bar | inch | mm | g/m |
| | | mm | inch | mm | inch | mm | inch | psi | bar | psi | bar | inch | mm | g/m |
| KIN506-3 | -3 | 1.00 | 1/8 | 3.00 | 0.300 | 7.6 | 4495 | 310 | 17980 | 1240 | 2.0 | 50 | 140 | |
| KIN506-4 | -4 | 0.75 | 3/16 | 4.80 | 0.360 | 9.1 | 3770 | 260 | 15080 | 1040 | 2.6 | 65 | 187 | |
| KIN506-5 | -5 | 0.65 | 1/4 | 6.40 | 0.410 | 10.4 | 3600 | 250 | 14400 | 1000 | 3.8 | 95 | 225 | |
| KIN506-6 | -6 | 0.75 | 5/16 | 8.00 | 0.510 | 13.0 | 3500 | 245 | 14000 | 980 | 5.0 | 125 | 287 | |
| KIN506-7 | -7 | 0.75 | 3/8 | 9.50 | 0.565 | 14.4 | 3330 | 230 | 13320 | 920 | 6.4 | 160 | 336 | |
| KIN506-8 | -8 | 0.75 | 13/32 | 10.50 | 0.595 | 15.1 | 2750 | 190 | 11000 | 760 | 7.0 | 175 | 395 | |
| KIN506-10 | -10 | 0.75 | 1/2 | 12.70 | 0.700 | 17.8 | 2300 | 160 | 9200 | 640 | 8.4 | 210 | 444 | |
| KIN506-12 | -12 | 0.90 | 5/8 | 16.00 | 0.855 | 21.70 | 1600 | 110 | 6400 | 440 | 10.8 | 270 | 583 | |
| KIN506-14 | -14 | 0.90 | 3/4 | 19.00 | 0.970 | 24.6 | 1380 | 95 | 5520 | 380 | 12.0 | 300 | 742 | |
| KIN506-16 | -16 | 1.00 | 7/8 | 22.20 | 1.090 | 27.7 | 1160 | 80 | 4650 | 320 | 12.4 | 310 | 810 | |
| KIN506-18 | -18 | 1.05 | 1 | 25.40 | 1.220 | 31.00 | 1080 | 75 | 4320 | 300 | 16.8 | 420 | 920 | |
| KIN506-20 | -20 | 1.20 | 1.1/8 | 29.00 | 1.400 | 35.60 | 870 | 60 | 3480 | 240 | 22.0 | 550 | 990 | |

Temperature Range : -54°C to +260°C

**KIN508 - PTFE GAS HOSE****Construction :****Inner tube :** Special quality of Sintered tube of polytetrafluoroethylene (PTFE)**Reinforcement :** Double braids of 304 series of stainless steel wire**Application :** PTFE hose has an excellent temperature characteristics both in high and low temperature, Excellent chemical resistance, non contamination properties, low coefficient of friction and resists deterioration. Therefore the hose is used generally in applications where all or one of the above properties is the main criteria Transport of cryogenic at high pressures

| Item Code | Dash Size | WT | ID | | OD | | WP | | BP | | BR/r | | W |
|-----------|-----------|------|------|-------|-------|------|------|-----|-------|------|------|-----|-----|
| | | mm | inch | mm | inch | mm | psi | bar | psi | bar | inch | mm | g/m |
| KIN508-04 | -4 | 1.00 | 1/4 | 6.40 | 0.470 | 11.9 | 5300 | 365 | 15900 | 1095 | 1.6 | 40 | 236 |
| KIN508-05 | -5 | 1.00 | 5/16 | 8.00 | 0.540 | 13.7 | 4560 | 315 | 13680 | 945 | 1.8 | 45 | 301 |
| KIN508-06 | -6 | 1.00 | 3/8 | 9.50 | 0.580 | 14.7 | 4350 | 300 | 13050 | 900 | 2.6 | 65 | 353 |
| KIN508-08 | -8 | 1.00 | 1/2 | 12.70 | 0.730 | 18.5 | 3840 | 265 | 11520 | 795 | 3.0 | 75 | 466 |
| KIN508-10 | -10 | 1.10 | 5/8 | 16.00 | 0.880 | 22.4 | 3400 | 235 | 10200 | 705 | 4.5 | 115 | 612 |
| KIN508-12 | -12 | 1.25 | 3/4 | 19.00 | 1.030 | 26.2 | 2900 | 200 | 8700 | 600 | 9.4 | 240 | 779 |
| KIN508-16 | -16 | 1.40 | 1 | 25.40 | 1.260 | 32.0 | 2200 | 150 | 6600 | 450 | 12.6 | 320 | 966 |

Temperature Range : -54°C to +260°C**KIN510 - MEDIUM PRESSURE FLUORO - COMP HOSE****Applicable Standard :** Polytetrafluoroethylene (PTFE) - Conductive**Construction :****Inner tube :** Polytetrafluoroethylene (PTFE) - Conductive**Reinforcement :** One or two braids of Fiber Glass Yarn**Application :** PTFE hose has an excellent temperature characteristics both in high and low temperature, Excellent chemical resistance, non contamination properties, low coefficient of friction and resists deterioration. Combination of the fiberglass outer braid and PTFE liner, make the hose essentially non-flammable. Ultimate fuel compatibility and Formable

| Item Code | Dash Size | ID | | OD | | WP | | BP | | BR/r | | W |
|-----------|-----------|------|-------|-------|------|-----|-----|------|-----|------|-----|-----|
| | | inch | mm | inch | mm | psi | bar | psi | bar | inch | mm | g/m |
| KIN510-04 | -3 | 1/4 | 6.40 | 0.428 | 10.9 | 800 | 54 | 3200 | 216 | 2.8 | 70 | 115 |
| KIN510-05 | -4 | 5/16 | 8.00 | 0.499 | 12.7 | 800 | 54 | 3200 | 216 | 3.0 | 76 | 130 |
| KIN510-06 | -5 | 3/8 | 9.53 | 0.605 | 15.4 | 800 | 54 | 3200 | 216 | 3.3 | 83 | 165 |
| KIN510-07 | -6 | 7/16 | 10.90 | 0.663 | 16.8 | 800 | 54 | 3200 | 216 | 3.8 | 96 | 175 |
| KIN510-08 | -7 | 1/2 | 13.00 | 0.769 | 19.5 | 800 | 54 | 3200 | 216 | 5.3 | 134 | 185 |

Temperature Range : -54°C to +260°C



KIN512 - GAS HOSE - ARAMID



Construction :

Inner tube : Sintered tube of polytetrafluoroethylene (PTFE)

Reinforcement : One or more braids of aramid fiber with one braid of 304 stainless steel wire. Thicker wall in PTFE core guarantees minimum diffusion and making ideal for gas application

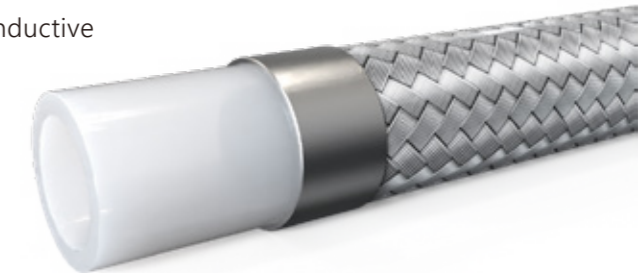
Application : Very high pressure gas lines Transport of cryogenic at high pressures

| Item Code | Dash Size | WT | | ID | | OD | | WP | | BP | | BR/r | | W |
|-----------|-----------|------|------|------|-------|------|------|-----|-------|------|------|------|-----|---|
| | | mm | inch | mm | inch | mm | psi | bar | psi | bar | inch | mm | g/m | |
| KIN512-04 | -4 | 1.00 | 1/4 | 6.35 | 0.485 | 12.3 | 6018 | 415 | 24070 | 1660 | 2.0 | 51 | 205 | |
| KIN512-06 | -6 | 1.00 | 3/8 | 9.65 | 0.620 | 15.7 | 5075 | 350 | 20300 | 1400 | 2.8 | 70 | 252 | |

Temperature Range : -54°C to +260°C



KIN516 - GAS HOSE - 1W



Applicable Standard : Polytetrafluoroethylene (PTFE) - Conductive

Construction :

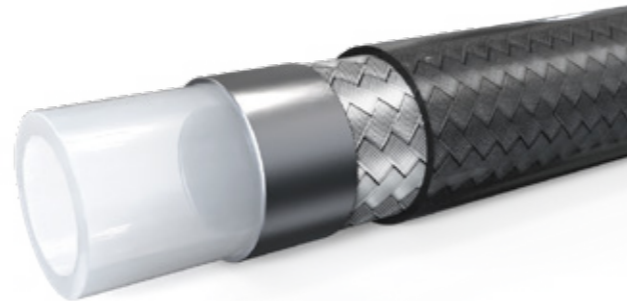
Inner tube : Sintered tube of polytetrafluoroethylene (P.T.F.E)

Reinforcement : Single braid of 304 Stainless steel wire. Thicker wall in PTFE core guarantees minimum diffusion and making ideal for gas applications

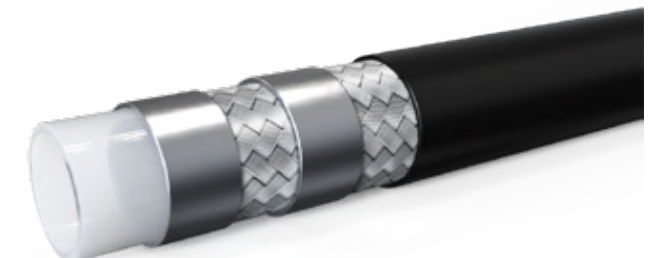
Application : High pressure gas lines like gas cylinders, breathing apparatus and aerosol charging lines.

| Item Code | Dash Size | WT | | ID | | OD | | WP | | BP | | BR/r | | W |
|-----------|-----------|------|-------|-------|-------|------|------|-----|-------|-----|------|------|-----|---|
| | | mm | inch | mm | inch | mm | psi | bar | psi | bar | inch | mm | g/m | |
| KIN516-02 | -2 | 1.00 | 1/8 | 3.35 | 0.255 | 6.5 | 3379 | 233 | 13514 | 932 | 1.5 | 38 | 65 | |
| KIN516-03 | -3 | 1.00 | 3/16 | 4.83 | 0.340 | 8.6 | 3002 | 207 | 11992 | 827 | 2.0 | 51 | 90 | |
| KIN516-04 | -4 | 1.00 | 1/4 | 6.35 | 0.390 | 9.9 | 2755 | 190 | 11020 | 760 | 2.5 | 64 | 140 | |
| KIN516-05 | -5 | 1.00 | 5/16 | 8.03 | 0.470 | 11.9 | 2465 | 170 | 9860 | 680 | 3.0 | 76 | 168 | |
| KIN516-06 | -6 | 1.00 | 3/8 | 9.65 | 0.520 | 13.2 | 2248 | 155 | 8990 | 620 | 3.5 | 89 | 200 | |
| KIN516-07 | -7 | 1.00 | 13/32 | 10.36 | 0.620 | 15.7 | 2030 | 140 | 8120 | 560 | 4.0 | 102 | 210 | |
| KIN516-08 | -8 | 1.00 | 1/2 | 12.70 | 0.660 | 16.8 | 1813 | 125 | 7250 | 500 | 5.1 | 130 | 265 | |

Temperature Range : -54°C to +260°C

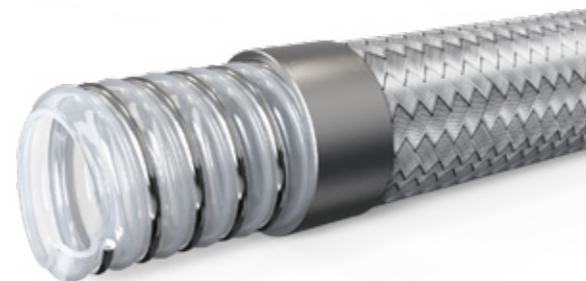
**KIN518 - BRAKE FLUID HOSE****Construction :****Inner tube :** Sintered tube of polytetrafluoroethylene (P.T.F.E)**Reinforcement :** Single braid of 304 series of stainless steel wire**Cover :** PVC / PU (Polyurethane) neon green**Application :** For braking systems in mountain bikes and motorcycles**Note :** Special colours available on request

| Item Code | Dash Size | WT | | ID | | OD | | WP | | BP | | BR/r | | W |
|-----------|-----------|------|------|------|-------|------|------|-----|-------|-----|------|------|-----|---|
| | | mm | inch | mm | inch | mm | psi | bar | psi | bar | inch | mm | g/m | |
| KIN518-02 | -2 | 0.80 | 1/8 | 3.50 | 0.287 | 7.3 | 4655 | 321 | 14007 | 966 | 1.5 | 38 | 93 | |
| KIN518-03 | -3 | 0.76 | 3/16 | 4.90 | 0.345 | 8.8 | 4000 | 276 | 12006 | 828 | 2.0 | 51 | 122 | |
| KIN518-04 | -4 | 0.76 | 1/4 | 6.35 | 0.392 | 10.0 | 2973 | 205 | 8918 | 615 | 2.8 | 70 | 164 | |

Temperature Range : -54°C to +260°C**KIN520 - NITROGEN GAS HOSE****Construction :****Inner tube :** Sintered tube of polytetrafluoroethylene (P.T.F.E)**Reinforcement :** Double braids of 316L Stainless steel wire**Cover :** Neoprene, Black**Application :** Off shore nitrogen gas transfer lines**Note :** Special colours available on request

| Item Code | Dash Size | WT | | ID | | OD | | WP | | BP | | BR/r | | W |
|-----------|-----------|------|------|-------|-------|------|------|-----|-------|------|------|------|------|---|
| | | mm | inch | mm | inch | mm | psi | bar | psi | bar | inch | mm | g/m | |
| KIN520-04 | -4 | 1.00 | 1/4 | 6.35 | 0.535 | 13.6 | 5293 | 365 | 15878 | 1095 | 2.6 | 65 | 310 | |
| KIN520-06 | -6 | 1.00 | 3/8 | 9.65 | 0.645 | 16.4 | 4133 | 285 | 12398 | 855 | 3.5 | 90 | 401 | |
| KIN520-08 | -8 | 1.10 | 1/2 | 12.70 | 0.790 | 20.1 | 3480 | 240 | 10440 | 720 | 5.1 | 130 | 522 | |
| KIN520-10 | -10 | 1.20 | 5/8 | 15.88 | 0.950 | 24.1 | 3045 | 210 | 9135 | 630 | 6.9 | 175 | 687 | |
| KIN520-12 | -12 | 1.20 | 3/4 | 19.05 | 1.120 | 28.4 | 2610 | 180 | 7830 | 540 | 7.9 | 200 | 885 | |
| KIN520-16 | -16 | 1.25 | 1 | 25.40 | 1.320 | 33.5 | 1958 | 135 | 5873 | 405 | 9.8 | 250 | 1042 | |

Temperature Range : -54°C to +260°C

**KIN522 - CONVOLUTED PTFE HOSE WITH HELIX WIRE AND STAINLESS STEEL STANDARD WALL****Construction :**

Inner tube : Helically convoluted sintered tube of polytetrafluoroethylene (P.T.F.E) External AISI 304 Wire Support

Reinforcement : Single braid of 304 of stainless steel wire

Application : High temperature steam lines. Very high vacuum lines

| Item Code | Dash Size | WT | ID | | OD | | WP | | V | BP | | BR/r | | W |
|-----------|-----------|------|-------|-------|-------|-------|------|-----|------|------|-----|------|-----|------|
| | | mm | inch | mm | inch | mm | psi | bar | mbar | psi | bar | inch | mm | g/m |
| KIN522-06 | -6 | 0.75 | 3/8 | 9.65 | 0.590 | 15.0 | 1305 | 90 | 899 | 5220 | 360 | 1.4 | 35 | 208 |
| KIN522-08 | -8 | 0.75 | 1/2 | 12.83 | 0.770 | 19.6 | 1160 | 80 | 899 | 4640 | 320 | 1.6 | 40 | 329 |
| KIN522-10 | -10 | 0.80 | 5/8 | 16.00 | 0.857 | 21.8 | 1088 | 75 | 899 | 4350 | 300 | 1.8 | 45 | 423 |
| KIN522-12 | -12 | 0.90 | 3/4 | 19.18 | 1.080 | 27.4 | 870 | 60 | 899 | 4205 | 290 | 2.2 | 55 | 548 |
| KIN522-16 | -16 | 1.00 | 1 | 25.53 | 1.370 | 34.8 | 580 | 40 | 899 | 3045 | 210 | 2.4 | 60 | 703 |
| KIN522-20 | -20 | 1.00 | 1.1/4 | 32.00 | 1.730 | 43.9 | 580 | 40 | 899 | 3045 | 210 | 3.1 | 80 | 911 |
| KIN522-24 | -24 | 1.00 | 1.1/2 | 38.50 | 1.940 | 49.3 | 508 | 35 | 899 | 2538 | 175 | 3.9 | 100 | 1311 |
| KIN522-32 | -32 | 1.10 | 2 | 51.00 | 2.470 | 62.70 | 363 | 25 | 899 | 1958 | 135 | 4.9 | 125 | 1655 |

Temperature Range : -54°C to +260°C

**KIN526 - CONVOLUTED PTFE HOSE WITH HELIX WIRE AND POLYPROPYLENE YARN STANDARD WALL****Construction :**

Inner tube : Helically convoluted sintered tube of polytetrafluoroethylene (P.T.F.E), External AISI 304 Wire Support

Reinforcement : Single braid of polypropylene yarn

Application : High temperature lines where vibrations and frequent handling are involved

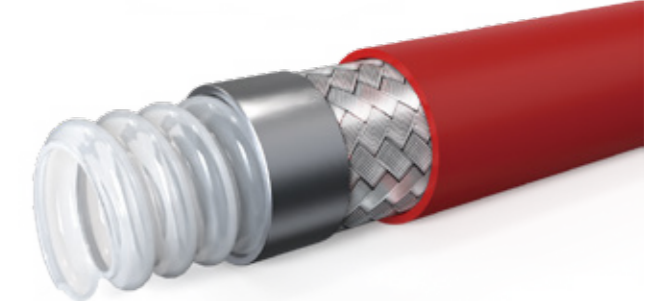
Note : Special colours available on request

| Item Code | Dash Size | WT | ID | | OD | | WP | | V | BP | | BR/r | | W |
|-----------|-----------|------|-------|-------|-------|------|-----|-----|------|------|-----|------|-----|------|
| | | mm | inch | mm | inch | mm | psi | bar | mbar | psi | bar | inch | mm | g/m |
| KIN526-08 | -8 | 0.75 | 1/2 | 12.70 | 0.866 | 22.0 | 290 | 20 | 899 | 1160 | 80 | 1.3 | 32 | 361 |
| KIN526-10 | -10 | 0.80 | 5/8 | 15.88 | 1.063 | 27.0 | 218 | 15 | 899 | 870 | 60 | 1.6 | 40 | 426 |
| KIN526-12 | -12 | 0.90 | 3/4 | 19.05 | 1.252 | 31.8 | 218 | 15 | 899 | 870 | 60 | 2.0 | 50 | 548 |
| KIN526-16 | -16 | 1.00 | 1 | 25.40 | 1.472 | 37.4 | 218 | 15 | 899 | 870 | 60 | 2.4 | 60 | 599 |
| KIN526-20 | -20 | 1.00 | 1.1/4 | 31.75 | 1.776 | 45.1 | 145 | 10 | 899 | 580 | 40 | 3.1 | 80 | 830 |
| KIN526-24 | -24 | 1.00 | 1.1/2 | 38.10 | 1.988 | 50.5 | 145 | 10 | 899 | 580 | 40 | 3.9 | 100 | 1162 |
| KIN526-32 | -32 | 1.10 | 2 | 50.80 | 2.500 | 63.5 | 145 | 10 | 899 | 580 | 40 | 4.9 | 125 | 1433 |

Temperature Range : -54°C to +260°C

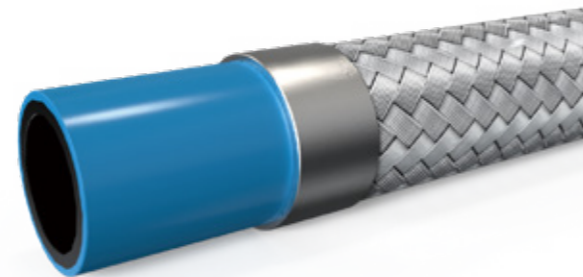
**KIN528 - CONVOLUTED PTFE HOSE WITH POLYPROPYLENE YARN - STANDARD WALL****Construction :****Inner tube :** Helically convoluted sintered tube of polytetrafluoroethylene (P.T.F.E)**Reinforcement :** Single braid of polypropylene yarn**Application :** High temperature lines where vibrations and frequent handling are involved. Reduced weight makes it suitable for easy handling

| Item Code | Dash Size | WT | ID | | OD | | WP | | V | BP | | BR/r | | W |
|-----------|-----------|------|-------|-------|-------|------|-----|-----|------|------|-----|------|-----|-----|
| | | mm | inch | mm | inch | mm | psi | bar | mbar | psi | bar | inch | mm | g/m |
| KIN528-08 | -8 | 0.75 | 1/2 | 12.70 | 0.866 | 22.0 | 290 | 20 | 899 | 1160 | 80 | 1.6 | 40 | 321 |
| KIN528-10 | -10 | 0.80 | 5/8 | 15.88 | 1.063 | 27.0 | 218 | 15 | 899 | 870 | 60 | 2.0 | 50 | 356 |
| KIN528-12 | -12 | 0.90 | 3/4 | 19.05 | 1.252 | 31.8 | 218 | 15 | 899 | 870 | 60 | 2.2 | 55 | 473 |
| KIN528-16 | -16 | 1.00 | 1 | 25.40 | 1.472 | 37.4 | 218 | 15 | 899 | 870 | 60 | 2.6 | 65 | 519 |
| KIN528-20 | -20 | 1.00 | 1.1/4 | 31.75 | 1.776 | 45.1 | 145 | 10 | 899 | 580 | 40 | 4.1 | 105 | 715 |
| KIN528-24 | -24 | 1.00 | 1.1/2 | 38.10 | 1.988 | 50.5 | 145 | 10 | 899 | 580 | 40 | 4.9 | 125 | 767 |
| KIN528-32 | -32 | 1.10 | 2 | 50.80 | 2.500 | 63.5 | 145 | 10 | 899 | 580 | 40 | 5.9 | 150 | 988 |

Temperature Range : -54°C to +260°C**KIN530 - MEDIUM PRESSURE HOSE****Construction :****Inner tube :** Sintered tube of polytetrafluoroethylene (P.T.F.E)**Reinforcement :** Single braid of 304 of Stainless steel wire**Cover :** Polyurethane(Fire Retardant)**Application :** High temperature lines where vibrations and frequent handling are involved**Note :** Special colours available on request

| Item Code | Dash Size | ID | | OD | | WP | | BP | | BR/r | | W |
|-----------|-----------|------|-------|-------|------|------|-----|------|-----|------|-----|-----|
| | | inch | mm | inch | mm | psi | bar | psi | bar | inch | mm | g/m |
| KIN530-04 | -4 | 1/4 | 6.40 | 0.470 | 11.9 | 2175 | 150 | 8700 | 600 | 1.5 | 38 | 170 |
| KIN530-06 | -6 | 3/8 | 9.50 | 0.600 | 15.2 | 1450 | 100 | 5800 | 400 | 2.5 | 64 | 230 |
| KIN530-08 | -8 | 1/2 | 12.70 | 0.724 | 18.4 | 1189 | 82 | 4757 | 328 | 3.5 | 89 | 330 |
| KIN530-10 | -10 | 5/8 | 16.00 | 0.890 | 22.6 | 1088 | 75 | 4352 | 300 | 4.5 | 114 | 390 |
| KIN530-12 | -12 | 3/4 | 19.00 | 1.024 | 26.0 | 1088 | 75 | 4352 | 300 | 7.1 | 180 | 530 |

Temperature Range : -54°C to +260°C

**KIN602 - HIGH PRESSURE PTFE HOSE (D-PAC BRAID DESIGN)****Construction :****Inner tube :** Sintered tube of polytetrafluoroethylene (Electrical Conductive)**Reinforcement :** SS 304 wire braid in a unique braid design**Application :** Industrial gases, hydraulic service with phosphate ester fluids, compressed natural gas, to transfer automotive sealants, multi component - injection moulding machine

| Item Code | Dash Size | ID | | OD | | WP | | BP | | BR/r | | W g/m |
|-----------|-----------|------|-------|-------|------|------|-----|-------|------|------|-----|----------|
| | | inch | mm | inch | mm | psi | bar | psi | bar | inch | mm | |
| KIN602-04 | -4 | 1/4 | 5.72 | 0.375 | 9.5 | 5000 | 345 | 15000 | 1034 | 1.5 | 38 | 149 |
| KIN602-06 | -6 | 3/8 | 7.82 | 0.480 | 12.2 | 5000 | 345 | 15000 | 1034 | 2.5 | 64 | 242 |
| KIN602-08 | -8 | 1/2 | 10.19 | 0.600 | 15.2 | 5000 | 345 | 15000 | 1034 | 2.9 | 73 | 345 |
| KIN602-10 | -10 | 5/8 | 12.57 | 0.710 | 18.0 | 5000 | 345 | 15000 | 1034 | 3.3 | 83 | 484 |
| KIN602-12 | -12 | 3/4 | 16.64 | 0.970 | 24.6 | 5000 | 345 | 15000 | 1034 | 4.0 | 102 | 982 |
| KIN602-16 | -16 | 1 | 22.23 | 1.245 | 31.6 | 5000 | 345 | 15000 | 1034 | 5 | 127 | 1518 |

Temperature Range : -54°C to +260°C**KIN606 - TAPE WRAPPED ELECTRICAL CONDUCTIVE CONVOLUTED HOSE****Applicable Standard :** SOOKIN hose proprietary product**Construction :****Inner tube :** Helically convoluted sintered tube of polytetrafluoroethylene (P.T.F.E) (Electrical Conductive)**Reinforcement :** Single braid of 304 series of stainless steel wire**Application :** P.T.F.E hose has an excellent temperature characteristics both in high and low temperature, Excellent chemical resistance, non contamination properties, low coefficient of friction and resists deterioration. Therefore the hose is used generally in applications where all or one of the above properties is the main criteria in automotive, chemical, pharmaceutical & food processing, plastic & rubber molding machines. Also for some applications the tube can also be made conductive to dissipate electro-static charges

| Item Code | Dash Size | ID | | OD | | WP | | BP | | BR/r | |
|-----------|-----------|-------|-------|-------|------|------|-----|------|-----|------|-----|
| | | inch | mm | inch | mm | psi | bar | psi | bar | inch | mm |
| KIN606-06 | -6 | 3/8 | 9.65 | 0.591 | 15.0 | 1000 | 69 | 4000 | 276 | 1.0 | 25 |
| KIN606-08 | -8 | 1/2 | 13.45 | 0.755 | 19.2 | 1250 | 86 | 5000 | 345 | 1.5 | 38 |
| KIN606-10 | -10 | 5/8 | 16.48 | 0.907 | 23.0 | 1400 | 97 | 5600 | 386 | 2.0 | 51 |
| KIN606-12 | -12 | 3/4 | 19.50 | 1.059 | 26.9 | 1100 | 76 | 4400 | 303 | 2.5 | 64 |
| KIN606-16 | -16 | 1 | 25.88 | 1.338 | 34.0 | 870 | 60 | 3480 | 241 | 3.0 | 76 |
| KIN606-20 | -20 | 1.1/4 | 32.3 | 1.566 | 39.8 | 870 | 60 | 3480 | 241 | 3.5 | 89 |
| KIN606-24 | -24 | 1.1/2 | 38.85 | 1.799 | 45.7 | 750 | 52 | 3000 | 207 | 4.5 | 114 |
| KIN606-32 | -32 | 2 | 51.18 | 2.294 | 58.3 | 490 | 34 | 1960 | 138 | 5.2 | 133 |

Temperature Range : -54°C to +260°C

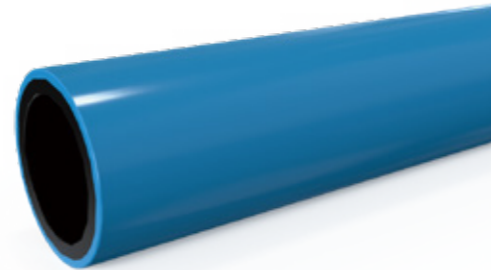
**KIN608 - TAPE WRAPPED CONVOLUTED HOSE****Applicable Standard :** SOOKIN hose proprietary product**Construction :****Inner tube :** Helically convoluted sintered tube of polytetrafluoroethylene (P.T.F.E) externally reinforced with PTFE impregnated fiberglass**Reinforcement :** Single braid of 304 series of stainless steel wire**Application :** P.T.F.E hose has an excellent temperature characteristics both in high and low temperature, Excellent chemical resistance, non contamination properties, low coefficient of friction and resists deterioration. Therefore the hose is used generally in applications where all or one of the above properties is the main criteria in automotive, chemical, pharmaceutical & food processing, plastic & rubber molding machines. Also for some applications the tube can also be made conductive to dissipate electro-static charges

| Item Code | Dash Size | ID | | OD | | WP | | BP | | BR/r | |
|-----------|-----------|-----------|-------|-------|------|-------|------|------|-----|------|-----|
| | | inch | mm | inch | mm | psi | bar | psi | bar | inch | mm |
| | | KIN608-06 | -6 | 3/8 | 9.65 | 0.591 | 15.0 | 1000 | 69 | 4000 | 276 |
| KIN608-08 | -8 | 1/2 | 13.45 | 0.755 | 19.2 | 1250 | 86 | 5000 | 345 | 1.5 | 38 |
| KIN608-10 | -10 | 5/8 | 16.48 | 0.907 | 23.0 | 1400 | 97 | 5600 | 386 | 2.0 | 51 |
| KIN608-12 | -12 | 3/4 | 19.50 | 1.059 | 26.9 | 1100 | 76 | 4400 | 303 | 2.5 | 64 |
| KIN608-16 | -16 | 1 | 25.88 | 1.338 | 34.0 | 870 | 60 | 3480 | 241 | 3.0 | 76 |
| KIN608-20 | -20 | 1.1/4 | 32.3 | 1.566 | 39.8 | 870 | 60 | 3480 | 241 | 3.5 | 89 |
| KIN608-24 | -24 | 1.1/2 | 38.85 | 1.799 | 45.7 | 750 | 52 | 3000 | 207 | 4.5 | 114 |
| KIN608-32 | -32 | 2 | 51.18 | 2.294 | 58.3 | 490 | 34 | 1960 | 138 | 5.2 | 133 |

Temperature Range : -54°C to +260°C**KIN610 - SMOOTH BORE TUBING ANGE****Applicable Standard :** SOOKIN hose proprietary product**Construction :****Inner tube :** Sintered tube of polytetrafluoroethylene (PTFE)**Application :** P.T.F.E hose has an excellent temperature characteristics both in high and low temperature, Excellent chemical resistance, non contamination properties, low coefficient of friction and resists deterioration. Therefore the hose is used generally in applications where all or one of the above properties is the main criteria in automotive, chemical, pharmaceutical & food processing, plastic & rubber molding machines. Also for some applications the tube can also be made conductive to dissipate electro-static charges**Note :** Special colours available on request

| Item Code | ID | | OD | | WT | | WP | | BP | |
|-----------|-----------|-------|-------|-------|-------|-------|-----|------|------|------|
| | inch | mm | inch | mm | inch | mm | psi | bar | psi | bar |
| | KIN610-02 | 0.079 | 2 | 0.157 | 4 | 0.039 | 1 | 148 | 10.2 | 444 |
| KIN610-03 | 0.118 | 3 | 0.197 | 5 | 0.039 | 1 | 148 | 10.2 | 444 | 30.6 |
| KIN610-04 | 0.157 | 4 | 0.236 | 6 | 0.039 | 1 | 148 | 10.2 | 444 | 30.6 |
| KIN610-05 | 0.197 | 5 | 0.276 | 7 | 0.039 | 1 | 148 | 10.2 | 444 | 30.6 |
| KIN610-06 | 0.236 | 6 | 0.315 | 8 | 0.039 | 1 | 148 | 10.2 | 444 | 30.6 |
| KIN610-08 | 0.315 | 8 | 0.394 | 10 | 0.039 | 1 | 148 | 10.2 | 444 | 30.6 |
| KIN610-10 | 0.394 | 10 | 0.472 | 12 | 0.039 | 1 | 118 | 8.2 | 370 | 25.5 |
| KIN610-12 | 0.472 | 12 | 0.551 | 14 | 0.039 | 1 | 118 | 8.2 | 370 | 25.5 |
| KIN610-14 | 0.551 | 14 | 0.630 | 16 | 0.039 | 1 | 118 | 8.2 | 370 | 25.5 |
| KIN610-16 | 0.630 | 16 | 0.709 | 18 | 0.039 | 1 | 118 | 8.2 | 370 | 25.5 |
| KIN610-20 | 0.787 | 20 | 0.945 | 24 | 0.079 | 2 | 74 | 5.1 | 296 | 20.4 |
| KIN610-50 | 1.969 | 50 | 2.126 | 54 | 0.079 | 2 | 74 | 5.1 | 296 | 20.4 |

Temperature Range : -54°C to +260°C

**KIN612 - SMOOTH BORE TUBING ANGE****Applicable Standard :** SOOKIN hose proprietary product**Construction :****Inner tube :** Sintered tube of polytetrafluoroethylene (Electrical Conductive)

Application : P.T.F.E hose has an excellent temperature characteristics both in high and low temperature, Excellent chemical resistance, non contamination properties, low coefficient of friction and resists deterioration. Therefore the hose is used generally in applications where all or one of the above properties is the main criteria in automotive, chemical, pharamceutical & food processing, plastic & rubber molding machines. Also for some applications the tube can also be made conductive to dissipate electro-static charges

Note : Special colours available on request

| Item Code | ID | | OD | | WT | | WP | | BP | |
|-----------|-------|----|-------|----|-------|----|-----|------|-----|------|
| | inch | mm | inch | mm | inch | mm | psi | bar | psi | bar |
| KIN612-02 | 0.079 | 2 | 0.157 | 4 | 0.039 | 1 | 148 | 10.2 | 444 | 30.6 |
| KIN612-03 | 0.118 | 3 | 0.197 | 5 | 0.039 | 1 | 148 | 10.2 | 444 | 30.6 |
| KIN612-04 | 0.157 | 4 | 0.236 | 6 | 0.039 | 1 | 148 | 10.2 | 444 | 30.6 |
| KIN612-05 | 0.197 | 5 | 0.276 | 7 | 0.039 | 1 | 148 | 10.2 | 444 | 30.6 |
| KIN612-06 | 0.236 | 6 | 0.315 | 8 | 0.039 | 1 | 148 | 10.2 | 444 | 30.6 |
| KIN612-08 | 0.315 | 8 | 0.394 | 10 | 0.039 | 1 | 148 | 10.2 | 444 | 30.6 |
| KIN612-10 | 0.394 | 10 | 0.472 | 12 | 0.039 | 1 | 118 | 8.2 | 370 | 25.5 |
| KIN612-12 | 0.472 | 12 | 0.551 | 14 | 0.039 | 1 | 118 | 8.2 | 370 | 25.5 |
| KIN612-14 | 0.551 | 14 | 0.630 | 16 | 0.039 | 1 | 118 | 8.2 | 370 | 25.5 |
| KIN612-16 | 0.630 | 16 | 0.709 | 18 | 0.039 | 1 | 118 | 8.2 | 370 | 25.5 |
| KIN612-20 | 0.787 | 20 | 0.945 | 24 | 0.079 | 2 | 74 | 5.1 | 296 | 20.4 |
| KIN612-50 | 1.969 | 50 | 2.126 | 54 | 0.079 | 2 | 74 | 5.1 | 296 | 20.4 |

Temperature Range : -54°C to +260°C**KIN616 - CONVOLUTED TUBING RANGE****Applicable Standard :** SOOKIN hose proprietary product**Construction :****Inner tube :** Helically convoluted sintered tube of polytetrafluoroethylene (PTFE)

Application : P.T.F.E hose has an excellent temperature characteristics both in high and low temperature, Excellent chemical resistance, non contamination properties, low coefficient of friction and resists deterioration. Therefore the hose is used generally in applications where all or one of the above properties is the main criteria in automotive, chemical, pharamceutical & food processing, plastic & rubber molding machines. Also for some applications the tube can also be made conductive to dissipate electro-static charges

Note : Special colours available on request

| Item Code | Dash Size | ID | | OD | | WP | | BP | | BP/r | |
|-----------|-----------|-------|------|-------|------|-----|-----|-----|-----|-------|-------|
| | | inch | mm | inch | mm | psi | bar | psi | bar | inch | mm |
| KIN616-02 | -4 | 1/4 | 7.0 | 0.415 | 10.6 | 60 | 4 | 210 | 14 | 0.787 | 20.0 |
| KIN616-03 | -6 | 3/8 | 9.7 | 0.589 | 15.0 | 60 | 4 | 210 | 14 | 0.866 | 22.0 |
| KIN616-04 | -8 | 1/2 | 13.1 | 0.705 | 17.9 | 60 | 4 | 210 | 14 | 1.024 | 26.0 |
| KIN616-05 | -10 | 5/8 | 16.0 | 0.860 | 21.9 | 45 | 3 | 180 | 12 | 1.260 | 32.0 |
| KIN616-06 | -12 | 3/4 | 19.0 | 1.039 | 26.4 | 45 | 3 | 180 | 12 | 2.165 | 55.0 |
| KIN616-08 | -16 | 1 | 25.0 | 1.378 | 35.0 | 45 | 3 | 150 | 10 | 3.150 | 80.0 |
| KIN616-10 | -24 | 1.1/2 | 35.5 | 1.772 | 45.0 | 38 | 3 | 135 | 9 | 3.937 | 100.0 |
| KIN616-12 | -32 | 2 | 47.5 | 2.343 | 59.5 | 30 | 2 | 120 | 8 | 4.921 | 125.0 |

Temperature Range : -54°C to +260°C



KIN618 - CONVOLUTED TUBING RANGE

Applicable Standard : SOOKIN hose proprietary product



Construction :

Inner tube : Helically convoluted sintered tube of polytetrafluoroethylene (PTFE) (Electrical Conductive)

Application : P.T.F.E hose has an excellent temperature characteristics both in high and low temperature, Excellent chemical resistance, non contamination properties, low coefficient of friction and resists deterioration. Therefore the hose is used generally in applications where all or one of the above properties is the main criteria in automotive, chemical, pharamceutical & food processing, plastic & rubber molding machines. Also for some applications the tube can also be made conductive to dissipate electro-static charges

Note : Special colours available on request

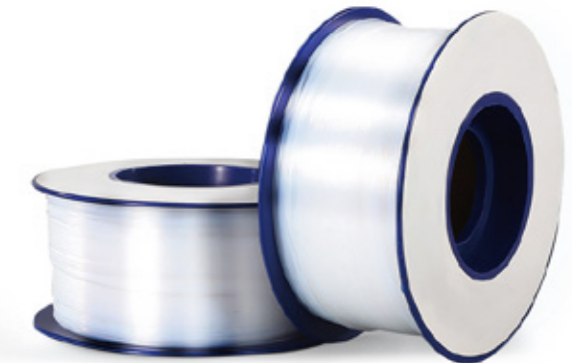
| Item Code | Dash Size | ID | | OD | | WP | | BP | | BP/r | |
|-----------|-----------|-----------|------|-------|------|-------|------|-----|-----|-------|-------|
| | | inch | mm | inch | mm | psi | bar | psi | bar | inch | mm |
| | | KIN618-02 | -4 | 1/4 | 7.0 | 0.415 | 10.6 | 60 | 4 | 210 | 14 |
| KIN618-03 | -6 | 3/8 | 9.7 | 0.589 | 15.0 | 60 | 4 | 210 | 14 | 0.866 | 22.0 |
| KIN618-04 | -8 | 1/2 | 13.1 | 0.705 | 17.9 | 60 | 4 | 210 | 14 | 1.024 | 26.0 |
| KIN618-05 | -10 | 5/8 | 16.0 | 0.860 | 21.9 | 45 | 3 | 180 | 12 | 1.260 | 32.0 |
| KIN618-06 | -12 | 3/4 | 19.0 | 1.039 | 26.4 | 45 | 3 | 180 | 12 | 2.165 | 55.0 |
| KIN618-08 | -16 | 1 | 25.0 | 1.378 | 35.0 | 45 | 3 | 150 | 10 | 3.150 | 80.0 |
| KIN618-10 | -24 | 1.1/2 | 35.5 | 1.772 | 45.0 | 38 | 3 | 135 | 9 | 3.937 | 100.0 |
| KIN618-12 | -32 | 2 | 47.5 | 2.343 | 59.5 | 30 | 2 | 120 | 8 | 4.921 | 125.0 |

Temperature Range : -54°C to +260°C



KIN620 - PTFE CAPILLARY TUBING

Applicable Standard : SOOKIN hose proprietary product



Note : Special colours available on request

| Specification | Inner Diameter | Outer Diameter | | | | | | Meter/Roll |
|---------------|----------------|----------------|---------|-----------|-----------|-----------|------|------------|
| | | S-Type | T-Type | | L-Type | WT (mm) | | |
| | | | WT (mm) | WT (mm) | | | | |
| KIN620-30 | 0.30 | 0.76 | 0.76 | 0.23±0.05 | 0.60 | 0.15±0.04 | 305 | |
| KIN620-28 | 0.38 | 0.84 | 0.84 | 0.23±0.05 | 0.68 | | 305 | |
| KIN620-26 | 0.46 | 0.92 | 0.92 | 0.23±0.05 | 0.76 | | 305 | |
| KIN620-24 | 0.56 | 1.16 | 1.06 | 0.30±0.06 | 0.86 | 0.15±0.04 | 305 | |
| KIN620-23 | 0.66 | 1.26 | 1.16 | | 0.25±0.06 | | 0.96 | 305 |
| KIN620-22 | 0.71 | 1.31 | 1.21 | | 0.25±0.06 | | 1.01 | 305 |
| KIN620-21 | 0.81 | 1.41 | 1.31 | 0.4±0.07 | 1.11 | 0.15±0.04 | 305 | |
| KIN620-20 | 0.86 | 1.66 | 1.46 | | 0.30±0.06 | | 1.16 | 305 |
| KIN620-19 | 0.96 | 1.76 | 1.56 | | 0.30±0.06 | | 1.26 | 305 |
| KIN620-18 | 1.07 | 1.87 | 1.67 | 0.4±0.07 | 1.37 | 0.20±0.05 | 305 | |
| KIN620-17 | 1.19 | 1.99 | 1.79 | | 0.30±0.06 | | 1.49 | 305 |
| KIN620-16 | 1.34 | 2.14 | 1.94 | | 0.30±0.06 | | 1.64 | 305 |
| KIN620-15 | 1.50 | 2.30 | 2.10 | 0.50±0.07 | 1.80 | 0.25±0.06 | 153 | |
| KIN620-14 | 1.68 | 2.48 | 2.28 | | 0.38±0.07 | | 2.08 | 153 |
| KIN620-13 | 1.93 | 2.73 | 2.53 | | 0.38±0.07 | | 2.33 | 153 |
| KIN620-12 | 2.16 | 2.96 | 2.77 | 0.50±0.07 | 2.56 | 0.25±0.06 | 153 | |
| KIN620-11 | 2.41 | 3.21 | 3.01 | | 0.38±0.07 | | 2.81 | 153 |
| KIN620-10 | 2.96 | 3.49 | 3.29 | | 0.38±0.07 | | 3.09 | 153 |
| KIN620-9 | 3.00 | 4.00 | 3.76 | 0.50±0.07 | 3.40 | 0.25±0.06 | 100 | |
| KIN620-8 | 3.38 | 4.38 | 4.14 | | 0.38±0.07 | | 3.78 | 100 |
| KIN620-7 | 3.76 | 4.76 | 4.52 | | 0.38±0.07 | | 4.16 | 100 |
| KIN620-6 | 4.22 | 5.22 | 4.98 | 0.50±0.07 | 4.72 | 0.25±0.06 | 100 | |
| KIN620-5 | 4.72 | 5.72 | 5.48 | | 0.38±0.07 | | 5.22 | 100 |
| KIN620-4 | 5.28 | 6.28 | 6.04 | | 0.38±0.07 | | 5.87 | 100 |
| KIN620-3 | 5.94 | 6.94 | 6.70 | 0.50±0.07 | 6.44 | 0.25±0.06 | 100 | |
| KIN620-2 | 6.68 | 7.68 | 7.44 | | 0.38±0.07 | | 7.18 | 100 |
| KIN620-1 | 7.46 | 8.46 | 8.22 | | 0.38±0.07 | | 7.96 | 100 |
| KIN620-0 | 8.38 | 9.38 | 9.14 | 0.50±0.07 | 8.88 | 100 | | |

Temperature Range : -54°C to +260°C